

Safer Sleep for babies

A guide for parents and carers



Basis
Baby sleep info source



Public Health
England



unicef UNITED KINGDOM

Safer sleep for babies

The information in this booklet about safer sleep has saved many babies' lives. It is all backed by research that has shown how to reduce the chance of babies dying suddenly with no explanation (known as sudden infant death syndrome, SIDS, or cot death). To reduce the chance of SIDS, families should follow this key advice for baby sleep. It is important that all parents and anyone involved in the care of a baby are aware of this advice.

Put them on their **BACK** for every sleep

In a **CLEAR, FLAT SLEEP SPACE**

Keep them **SMOKE-FREE** day and night

Always place your baby on their back for sleep

- Put your baby down on their back – not their front or side – for every sleep
- No special equipment or products are needed to keep them on their back
- Once they start to roll from front to back by themselves, you can leave them to find their own position for sleep
- Tummy time while awake can help to strengthen the muscles they need for rolling.

Reason: many more babies have died suddenly when placed to sleep on their front or side, rather than on their back. Since the Back to Sleep campaign in 1991, the rate of SIDS has dropped by 80%.

Give your baby a clear, safe sleep space, in the same room as you

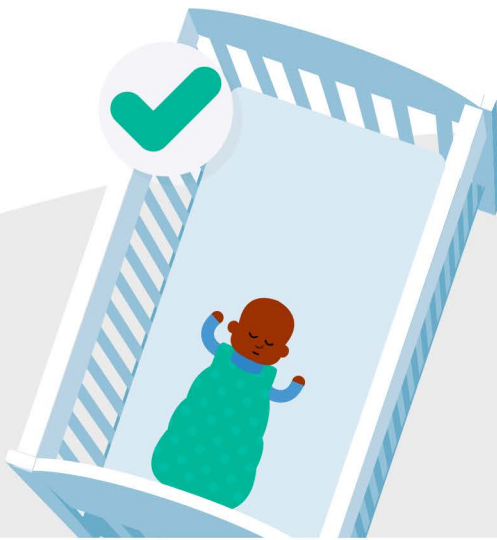
For most babies, a clear sleep space will mean a cot or a Moses basket which are designed to keep babies safe.

Whatever space you choose, follow these guidelines:

- A firm, flat mattress with no raised or cushioned areas
- No pillows, quilts, duvets or bumpers
- No pods, nests or sleep positioners
- Make sure your baby's head is kept uncovered so they don't get too hot. Try to keep the room temperature between 16 and 20 degrees so your baby does not get too hot or cold and make sure bedding is appropriate for the time of year
- Place baby at the bottom of the cot so that they cannot wriggle under covers – this is called 'feet to foot'

- Ensure that the sleep space, is kept clear of all items and there is nothing within reach of the space e.g., blind cords, nappy sacks or soft toys
- Babies should always be in the same room as you for the first six months for sleep, day and night. This doesn't mean you can't leave the room to make a cup of tea or go to the toilet, but for most of the time when they are sleeping they are safest if you are close by
- Babies should not be allowed to sleep in bouncy chairs and babies should not be left sleeping in the car seat when not travelling in the car. Car seats are not to be used as sleep spaces in the house.

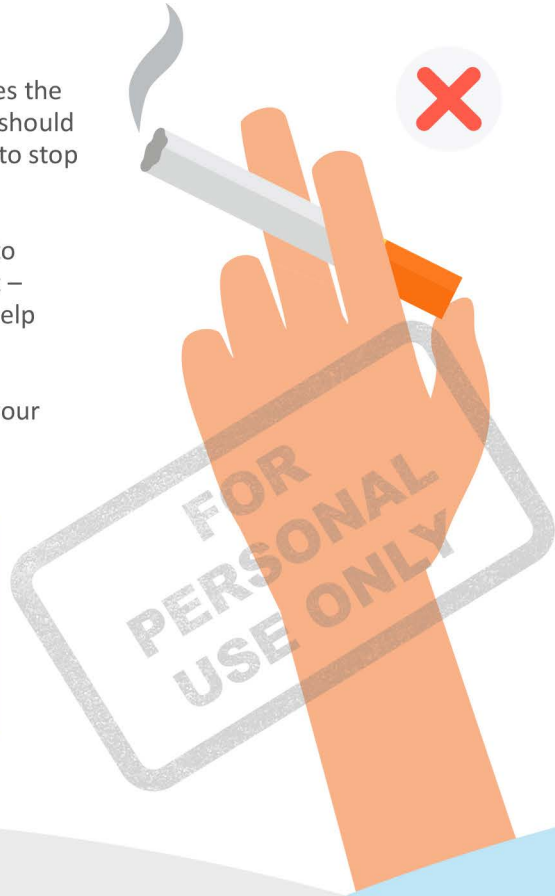
Reason: soft or raised surfaces, pillows or quilts can increase the chance of SIDS by making it difficult for babies to breathe or cool down. The chance of SIDS is lower when babies sleep in a room with an adult than when they sleep alone.



Keep your baby smoke-free before and after birth

- Smoking in pregnancy greatly increases the chance of SIDS – all pregnant women should make every effort to take up the help to stop smoking provided locally
- You should also avoid being exposed to others' smoke when you are pregnant – if your partner smokes, they can get help to quit too
- Keep your baby away from smoke in your home, car and out and about.

Reason: babies who are exposed to tobacco smoke before or after birth have a much greater chance of SIDS than babies who are kept smoke-free.



Breastfeeding

- Breastmilk and breastfeeding provide all the nutrition your baby needs for the first six months and protects them against infections and diseases
- Breastfeeding lowers the chance of SIDS.

If you need more help with breastfeeding, talk to your midwife or health visitor or call the National Breastfeeding Helpline on 0300 100 0212.

Reason: SIDS risk is halved in babies who are breastfed for at least two months.



Bedsharing more safely

Whether you choose to bed-share or it is unplanned, there are some key risks you should avoid.

It is dangerous to share a bed with your baby if:

- you or anyone in the bed has recently drunk any alcohol
- you or anyone in the bed smokes
- you or anyone in the bed has taken any drugs that make you feel sleepy
- your baby was born prematurely (before 37 weeks of pregnancy) or weighed under 2.5kg or 5½ lbs when they were born.

In these scenarios, it is always best to put baby in their own safe sleep space, such as a cot or Moses basket. Keeping the cot or Moses basket next to the bed might make it easier to do this.

Reason: studies have found that bedsharing with your baby after drinking alcohol or using drugs has a very high risk of SIDS. Sleeping close to a smoker also greatly increases the chance of SIDS. Premature and very small babies have a greater chance of SIDS when they share a bed with an adult.

Things to remember if bedsharing



Keep pets away from the bed and do not have other children sharing the bed

Keep pillows and adult bedding away from baby

Try to make sure or check that baby cannot be trapped, wedged or fall out of bed or get trapped between the mattress and the wall

Follow the tips if you think you might fall asleep with your baby in the bed

Never sleep with your baby on a sofa or armchair

Sofas and armchairs are dangerous places to fall asleep with your baby – move somewhere safer if you might fall asleep.

Reason: the risk of SIDS is 50 times higher for babies when they sleep on a sofa or armchair with an adult. They are also at risk of accidental death as they can easily slip into a position where they are trapped and can't breathe.



Any time you think you might fall asleep with your baby, make sure they are on their back in a clear, safe space. If you are breastfeeding whilst lying down, make sure your baby cannot roll onto their front. Try and keep your baby on their back, or move them onto their back once they have been fed.

If you follow the advice in this leaflet for every sleep, the chance of SIDS is very low. Do not worry alone – if you have a question, ask your midwife or health visitor or contact The Lullaby Trust or Basis.

Please use these links for further information on the following:

When babies start to roll
lullabytrust.org.uk/sleepingposition

Premature babies
lullabytrust.org.uk/premature

Baby boxes
lullabytrust.org.uk/wp-content/uploads/baby-box-info-leaflet.pdf

Slings
rospa.com/home-safety/advice/product/baby-slings

Remember: if you think your baby is showing any signs of being unwell, always seek medical advice. The Lullaby Trust Baby Check app can help parents or carers determine how ill their baby is. Available free from Google Play or the App Store.

FOR
PERSONAL
USE ONLY

Produced with the kind support of Public Health England



Public Health
England



Basis
Baby sleep info source

The UK Committee for UNICEF (UNICEF UK)

Baby Friendly Initiative

www.unicef.org.uk/babyfriendly

T: 020 7375 6144

E: bfi@unicef.org.uk

Baby Sleep Information Source (Basis)

www.BasisOnline.org.uk

E: basis.online@dur.ac.uk

The Lullaby Trust

www.lullabytrust.org.uk

T: 020 7802 3200

Information line: 0808 802 6869 (Freephone)



Local Contact Details:



Registered charity no: 262191