

# A new approach to area **SEND** inspections

What people said and what  
we are doing

I think...



**Easy  
Read**



# Contents

Introduction.....	3
The survey .....	4
What people said.....	6
For more information .....	21



In this Easy Read document, some words are in **bold**. We explain what these words mean in the sentence after we have used them.



Some words are [blue and underlined](#). These are links that will go to another website which has more information.

# Introduction



The Office for Standards in Education, Children's Services and Skills (Ofsted) checks the quality of education services in England, like schools and nurseries. We also look at children's social care.



The Care Quality Commission (CQC) checks the quality of health and social care services in England, like hospitals and care homes.



Between June and September 2022 we asked people what they thought about the way we check services for children and young people with special educational needs and disabilities (SEND).



We asked people what they thought about our ideas to change the way we check services.

This Easy Read document explains what people said and what we are doing.

# The survey



We asked people to answer questions in a survey, to tell us what they thought about our ideas.



There was a separate survey for children and young people with SEND.



About half the people did not do the whole survey, but sent us what they had done.



We have still listened and included the answers that they did give.

## Easy Read



There were Easy Read versions of both surveys.

## Meetings



We also asked people to come to meetings where we could talk more about our ideas for change.



Some of these meetings were face-to-face.



Some were online.

# What people said



We have 9 main ideas for changes to the way we look into local services for children and young people with SEND.



We asked people what they thought about each idea.

## 1. Looking at how children's lives are changed



We think we should check that services are making a difference and improving the lives of children and young people with SEND.



### What people said

Most people agreed with this idea.



Some people thought that we should also check that services are doing the things that they must do by law.



Some people said we should look at how schools work with other local services so that all children and young people with SEND are included.



## **What we will do**

We will look at how services affect the lives of children and young people with SEND.



We will look at how schools work with other services so that all children and young people with SEND are included.



We will also check that services are doing the things they must do by law.

## 2. How we see if services are making a difference



We think we should have a list of checks that we do when we look into whether services are making a difference.

We think this list should include:



- A check that services understand who needs support, what support is needed and when it should be provided.



- A check that services are including children, young people and their families in choices about support.



- A check that services are giving children and young people the right help at the right time.



- A check that services are getting children and young people ready to go to college or get a job, and to be able to do more for themselves.





- A check that services are supporting children and young people to feel included in their local area.



## **What people said**

Most people agreed with these ideas.



Some people said we should listen to children, young people and their families as well as professionals when we are checking services.



## **What we will do**

We will start to make all these checks in 2023.

### 3. Making our reports clearer



We think our reports should be clearer about what we find when we look into local services.



We think that our reports should help people understand how good services are in different local areas.

#### What people said



Most people agreed with this idea.



But some people said that we should have better ways to explain the differences between services in a local area.

#### What we will do



In 2023 our reports will start to have better ways to explain what local services are doing well, and what needs to improve.

## 4. Suggesting changes

We think that our reports about services should also say:

- What problems we think they need to deal with.
- What changes we think they should make to improve.



### What people said

Most people agreed with this idea.



Many people thought that this idea would help services get better.



Some people said that our reports should say who should be doing what, to make services better.

## What we will do



In the future, our reports will explain what changes need to be made and who should make the changes.



Our reports will also explain which services are working well, so that other services can learn from them.

## 5. Writing plans



We think the local services we look into should write a plan together about what they are going to do to improve.



### What people said

Most people agreed with this idea.



People had different ideas about how quickly local services should write the plans.



Some people thought the plans should be written quickly.



Other people said that services should take time to write the plans, so they can fully involve children, young people and families.



## What we will do

From 2023 we will ask local services to write a plan after we have checked their services.



Local services should involve children, young people and families in writing these plans.

## 6. Listening to children, young people and their families



When we look into local services, we want to do more to involve people who use the services, like children, young people, families and carers.



### What people said

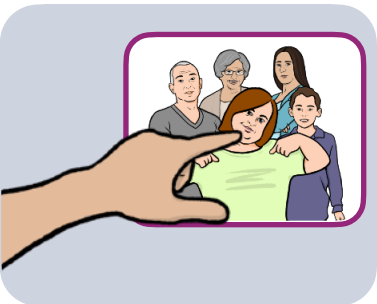
Most people agreed with this idea.



Most people were happy that we want get people who use the services more involved.



Children and young people said that more of our information should be easy for people to understand.

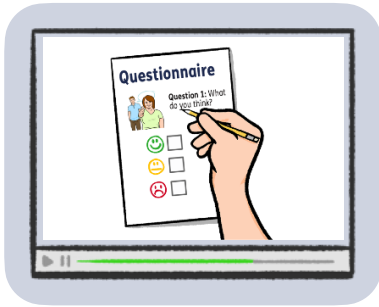


Some people wanted to know more about how we choose which children, young people and families to involve.

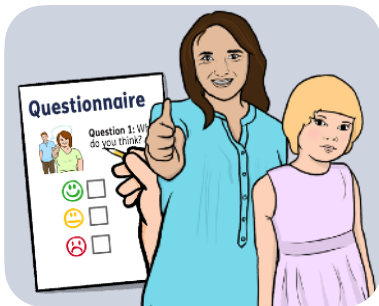
## What we will do



When we check on services in an area, we will also send a survey to children, young people and families who use the services.



The surveys will include some videos which explain more about the questions.



We will check that the way we run the surveys is good for the people who are answering the questions.



## 7. Including alternative provision



We think we should look into how and why **alternative provision** is being used in local areas, to see if children and young people are getting the right support.



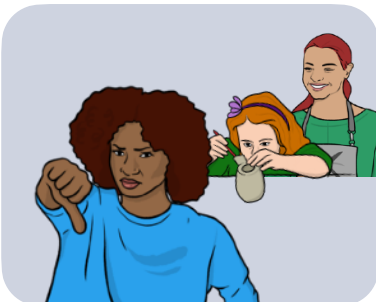
**Alternative provision** is support for any child or young person with needs that can't be met in a **mainstream school**.

A **mainstream school** is a regular school that most children go to.



### What people said

Most people agreed with this idea.



Many parents and carers said that there was not enough alternative provision available.



They said that mainstream schools should get better at including children and young people with SEND.

## **What we will do**



When we check on services in a local area, we will also check if services make sure that children and young people who go to alternative provision get the right support.

## 8. Looking at services again



If we think local services are not doing enough to help children and young people with SEND in their area, the services have to write a plan explaining how they will get better.



We think we should look into the services again 18 months later to see if they are following their plan.



### What people said

Most people agreed with this idea.



Many people said that 18 months was too long to wait and that we should check the services again a year later.

### What we will do

We will usually look at services again 18 months later, but we can come and look at services any time we want.



## 9. Meeting with services



In between looking into local services, we think we should have meetings with them to talk about how they can improve.

### What people said



Most people agreed with this idea.



Some people said that children, young people and families should be involved in these meetings.

### What we will do



We will ask services to ask children, young people and their families for their ideas often, so we can talk about them in the meetings.

# For more information



You can look at our website here:  
[https://www.gov.uk/government/  
organisations/ofsted](https://www.gov.uk/government/organisations/ofsted)



If you need more information please  
contact us by email:  
[area.send@ofsted.gov.uk](mailto:area.send@ofsted.gov.uk)